



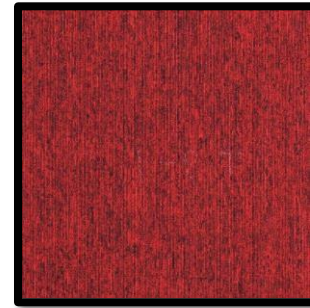
# Magnifyde Floorings

Modular Carpet Tile

**PROMETHEAN**

Series





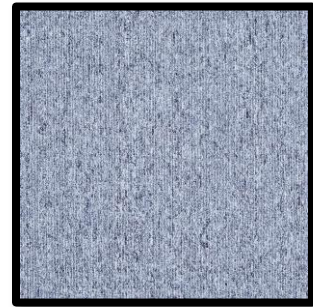
BRICK



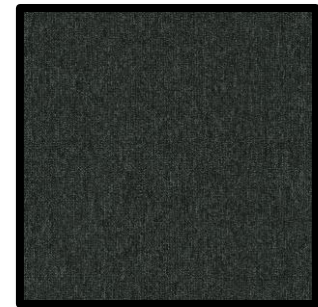
MOCHA



AZURE



CLOUDY GREY



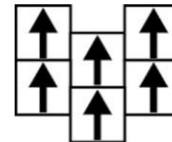
STONE GREY

( BRICK + AZURE + MOCHA + CLOUDY GREY + STONE GREY )

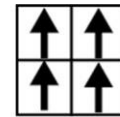


## PROMETHEAN Series

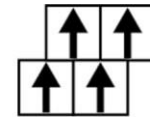
Construction	Loop Pile
Yarn	100% PP
Dye Method	100% Solution Dyed
Stitch	12 per inch
Gauge	1/10 High-Low Loop
Pile Height	4mm
Pile Weight	520g/Sqm
Total Thickness	7mm~7.5mm(± 5%)
Secondary Backing	PVC, reinforced by Glass Fiber
Total Size	50cm x 50cm
Packing	24 Tiles / Box



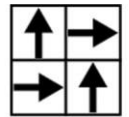
ASHLAR



DIRECTIONAL



BRICK



QUARTER TURN



(AZURE+ MOCHA + CLOUDY GREY + STONE GREY )